

INDUSTRIAL ACCIDENT PREVENTION ASSOCIATION

Lost Time Injury / Illness Analysis (Data as of December 2004)

2004



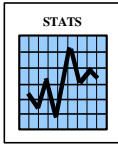
Lost Time Injury/Illness Analysis
for

Young Workers (Age 15-24)

IAPA Member Firms

FEATURES: Analysis by....

- * *Event of Injury/Illness*
- * *Nature of Injury/Illness*
- * *Part of Body Injured*
- * *Source of Injury/Illness*
- * *Occupation of Claimants*
- * *Age of Claimants*
- * *Length of Service of Claimants*



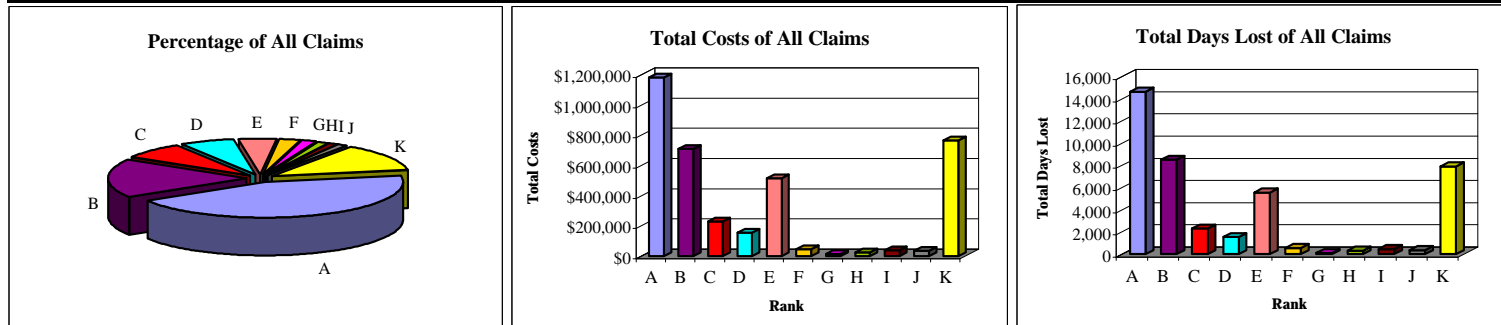
INDUSTRIAL ACCIDENT PREVENTION ASSOCIATION

Lost Time Injury / Illness Analysis (Data as of December 2004)

Claims Summary by Nature of Injury/Illness (Top 10)

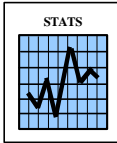
- 2004 -

Nature	Rank	# of Claims	% of Claims	Total Costs	Avg Costs/Claim	Total Days Lost	Avg Days Lost/Claim
Nonclassifiable	A	1,527	44%	\$1,181,342	\$774	14,636	10
Sprains, Strains, Tears	B	611	18%	\$708,233	\$1,159	8,502	14
Cuts, Lacerations	C	257	7%	\$228,078	\$887	2,303	9
Bruises, Contusions	D	229	7%	\$152,954	\$668	1,537	7
Fractures	E	148	4%	\$514,615	\$3,477	5,549	37
Nonspecified Injuries And Disorders, N.E.C.	F	85	2%	\$45,757	\$538	561	7
Foreign Bodies (Superficial Splinters, Chips)	G	61	2%	\$12,252	\$201	93	2
Soreness, Pain, Hurt, Except The Back	H	49	1%	\$23,779	\$485	320	7
Back Pain, Hurt Back	I	44	1%	\$36,348	\$826	471	11
Punctures, Except Bites	J	31	1%	\$32,982	\$1,064	352	11
All Other	K	438	13%	\$765,438	\$1,748	7,911	18
Total/Weighted Avg		3,480	100%	\$3,701,778	\$1,064	42,235	12



N.E.C. - Not Elsewhere Classified

IAPA Member Firms Young Workers (Age 15-24)

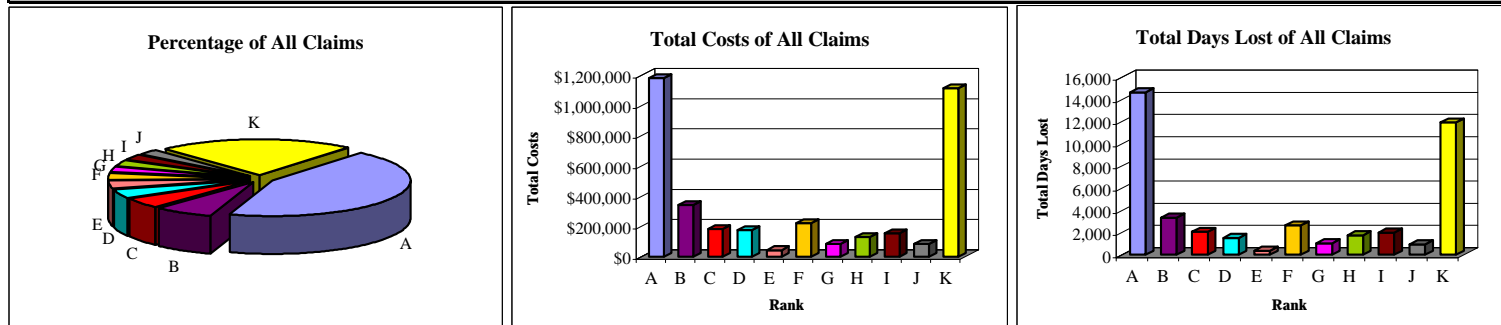


INDUSTRIAL ACCIDENT PREVENTION ASSOCIATION

Lost Time Injury / Illness Analysis (Data as of December 2004)

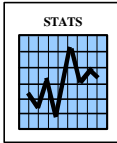
Claims Summary by Part of Body Injured (Top10) - 2004 -

Part of Body	Rank	# of Claims	% of Claims	Total Costs	Avg Costs/Claim	Total Days Lost	Avg Days Lost/Claim
Nonclassifiable	A	1,526	44%	\$1,179,840	\$773	14,623	10
Fingers, Except Thumb	B	239	7%	\$340,184	\$1,423	3,334	14
Low(Er) Back, Unspecified Location	C	173	5%	\$180,879	\$1,046	2,078	12
Hand(S), Except Finger(S)	D	137	4%	\$174,914	\$1,277	1,516	11
Eye(S), External (E.G. For Superficial Corneal Abr	E	125	4%	\$42,923	\$343	372	3
Wrist(S)	F	107	3%	\$220,170	\$2,058	2,653	25
Knee(S)	G	95	3%	\$82,266	\$866	1,048	11
Shoulder, Including Clavicle, Scapula	H	93	3%	\$128,453	\$1,381	1,755	19
Lumbar Region Of The Back	I	92	3%	\$155,014	\$1,685	1,993	22
Ankle(S)	J	87	3%	\$83,144	\$956	952	11
All Other	K	806	23%	\$1,113,985	\$1,382	11,911	15
Total/Weighted Avg		3,480	100%	\$3,701,772	\$1,064	42,235	12



N.E.C. - Not Elsewhere Classified

IAPA Member Firms Young Workers (Age 15-24)

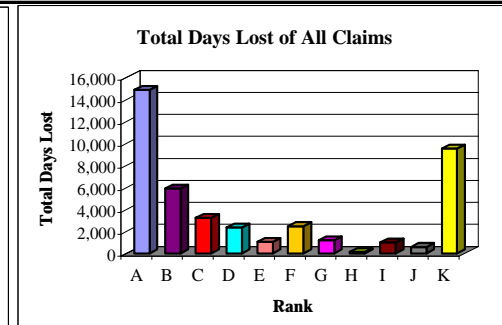
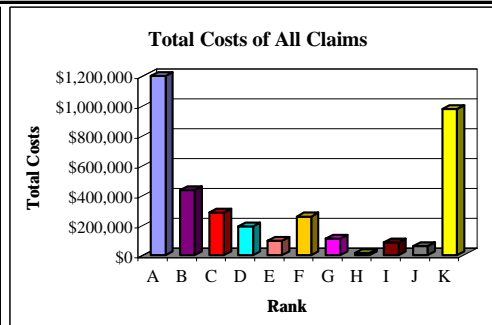
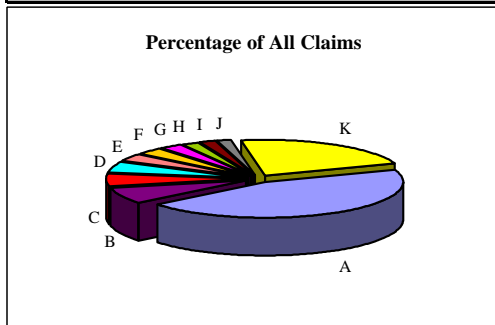


INDUSTRIAL ACCIDENT PREVENTION ASSOCIATION

Lost Time Injury / Illness Analysis (Data as of December 2004)

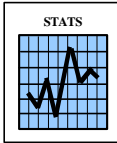
Claims Summary by Source of Injury/Illness (Top 10) - 2004 -

Source	Rank	# of Claims	% of Claims	Total Costs	Avg Costs/Claim	Total Days Lost	Avg Days Lost/Claim
Nonclassifiable	A	1,555	45%	\$1,198,925	\$771	14,863	10
Bodily Motion	B	263	8%	\$432,599	\$1,645	5,896	22
Floors, Walkways, Ground Surfaces	C	192	6%	\$283,502	\$1,477	3,215	17
Containers--Nonpressurized	D	170	5%	\$192,678	\$1,133	2,344	14
Building Materials--Solid Elements	E	126	4%	\$93,866	\$745	1,042	8
Woodworking, Metal, And Special Material Machinery	F	111	3%	\$257,636	\$2,321	2,478	22
Handtools--Nonpowered	G	93	3%	\$111,220	\$1,196	1,182	13
Scrap, Waste, Debris	H	74	2%	\$12,850	\$174	115	2
Other Sources, N.E.C.	I	66	2%	\$84,220	\$1,276	989	15
Metal Materials--Nonstructural	J	59	2%	\$58,075	\$984	574	10
Other Sources	K	771	22%	\$976,205	\$1,266	9,537	12
Total/Weighted Avg		3,480	100%	\$3,701,776	\$1,064	42,235	12



N.E.C. - Not Elsewhere Classified

IAPA Member Firms Young Workers (Age 15-24)



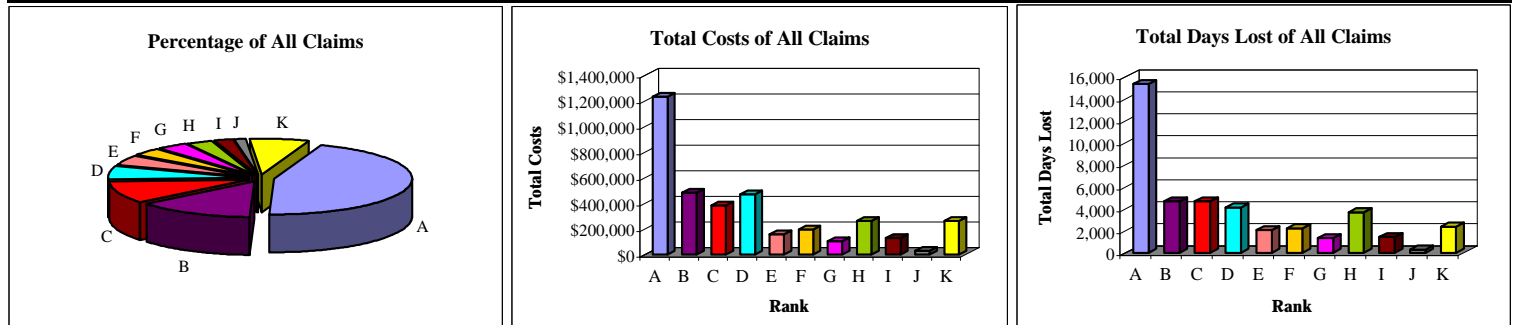
INDUSTRIAL ACCIDENT PREVENTION ASSOCIATION

Lost Time Injury / Illness Analysis (Data as of December 2004)

Claims Summary by Event of Injury/Illness (Top 10)

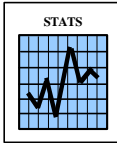
- 2004 -

Event	Rank	# of Claims	% of Claims	Total Costs	Avg Costs/Claim	Total Days Lost	Avg Days Lost/Claim
Nonclassifiable	A	1,567	45%	\$1,230,279	\$785	15,360	10
Struck By Object	B	473	14%	\$483,054	\$1,021	4,684	10
Overexertion	C	350	10%	\$381,948	\$1,091	4,671	13
Caught In Or Compressed By Equipment Or Objects	D	210	6%	\$470,819	\$2,242	4,125	20
Bodily Reaction	E	156	4%	\$156,561	\$1,004	2,066	13
Fall On Same Level	F	127	4%	\$196,242	\$1,545	2,234	18
Struck Against Object	G	127	4%	\$104,628	\$824	1,328	10
Repetitive Motion	H	102	3%	\$260,602	\$2,555	3,675	36
Fall To Lower Level	I	77	2%	\$126,776	\$1,646	1,421	18
Exposure To Caustic, Noxious, Or Allergenic Substa	J	51	1%	\$27,936	\$548	290	6
All Other	K	240	7%	\$262,930	\$1,096	2,381	10
Total/Weighted Avg		3,480	100%	\$3,701,775	\$1,064	42,235	12



N.E.C. - Not Elsewhere Classified

IAPA Member Firms Young Workers (Age 15-24)

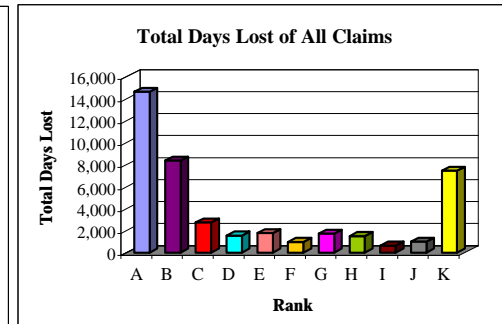
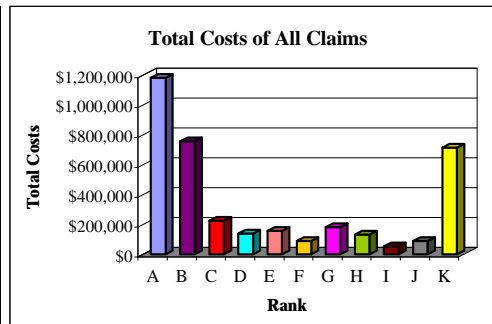
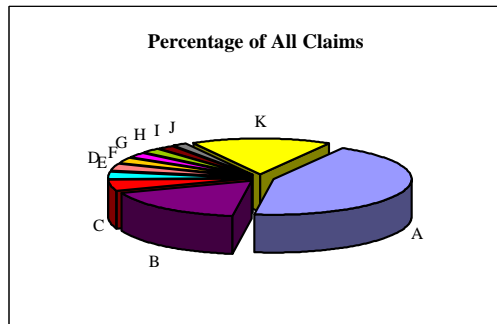


INDUSTRIAL ACCIDENT PREVENTION ASSOCIATION

Lost Time Injury / Illness Analysis (Data as of December 2004)

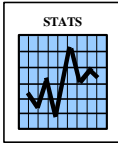
Claims Summary by Occupation of Claimants (Top 10) - 2004 -

Occupation	Rank	# of Claims	% of Claims	Total Costs	Avg Costs/Claim	Total Days Lost	Avg Days Lost/Claim
Unknown Occupation Code	A	1,525	44%	\$1,179,685	\$774	14,622	10
Labourers In Processing, Manufacturing And Utiliti	B	600	17%	\$753,948	\$1,257	8,364	14
Machining, Metalworking, Woodworking & Related Mach	C	171	5%	\$222,491	\$1,301	2,730	16
Occupation Not Stated	D	123	4%	\$138,712	\$1,128	1,535	12
Longshore Workers And Material Handlers	E	114	3%	\$155,242	\$1,362	1,774	16
Mechanical, Electrical And Electronics Assemblers	F	91	3%	\$88,740	\$975	952	10
Other Assembly And Related Occupations	G	87	3%	\$182,334	\$2,096	1,704	20
Trades Helpers And Labourers	H	74	2%	\$131,042	\$1,771	1,507	20
Machine Oper. & Rel. Wrkrs. In Chemical, Plastic, Ru	I	63	2%	\$51,615	\$819	623	10
Cleaners	J	60	2%	\$87,241	\$1,454	983	16
All Other	K	572	16%	\$710,726	\$1,243	7,441	13
Total/Weighted Avg		3,480	100%	\$3,701,776	\$1,064	42,235	12



N.E.C. - Not Elsewhere Classified

IAPA Member Firms Young Workers (Age 15-24)

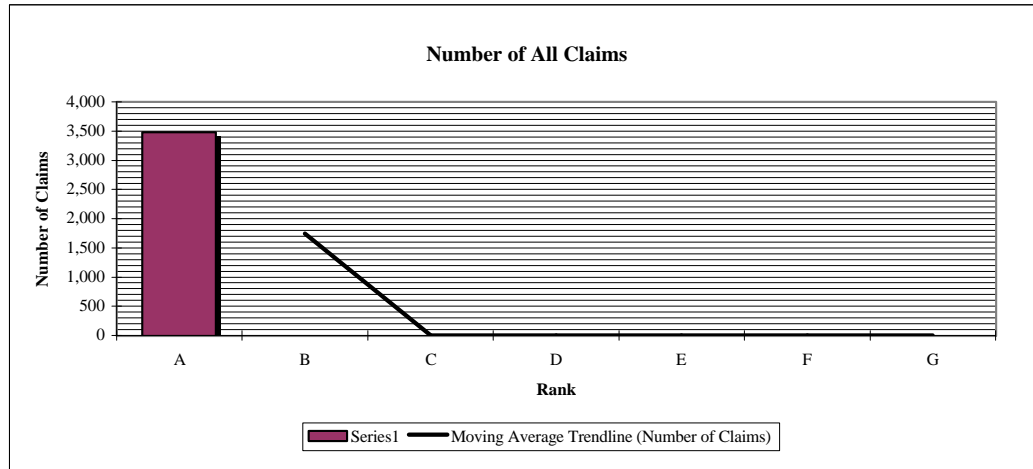


INDUSTRIAL ACCIDENT PREVENTION ASSOCIATION

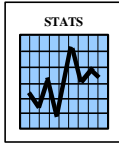
Lost Time Injury / Illness Analysis (Data as of December 2004)

Claims Summary by Age of Claimants - 2004 -

Age	Rank	# of Claims	% of Claims
14 - 24	A	3,480	100.0%
25 - 34	B	0	0.0%
35 - 44	C	0	0.0%
45 - 54	D	0	0.0%
55 - 64	E	0	0.0%
65 +	F	0	0.0%
Unspecified	G	0	0.0%
Total/Weighted Avg		3,480	100%



IAPA Member Firms Young Workers (Age 15-24)

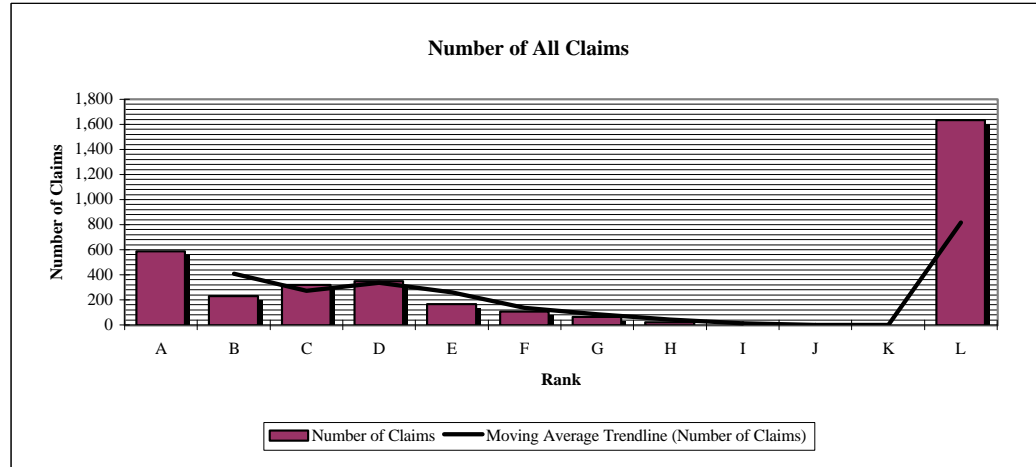


INDUSTRIAL ACCIDENT PREVENTION ASSOCIATION

Lost Time Injury / Illness Analysis (Data as of December 2004)

Claims Summary by Length of Service of Claimants - 2004 -

Length of Service	Rank	# of Claims	% of Claims
3 Months/Less	A	586	16.8%
4 - 6 Months	B	228	6.6%
7 - 12 Months	C	318	9.1%
1 - 2 Years	D	351	10.1%
2 - 3 Years	E	165	4.7%
3 - 4 Years	F	107	3.1%
4 - 5 Years	G	63	1.8%
5 - 10 Years	H	22	0.6%
10 - 15 Years	I	1	0.0%
15 - 20 Years	J	2	0.1%
20+ Years	K	1	0.0%
Unspecified	L	1,636	47.0%
Total/Weighted Avg		3,480	100%



IAPA Member Firms Young Workers (Age 15-24)